

# **DOTH-300S** [Basic Type]

## **FIRST-EVER SLIM DESIGN BUT MOST RUGGED PDA**

Right choice makes you do  
**best performance**

“Best Design  
PDA designed for the  
best possible portability”





Section	Specification
OS	Windows Mobile 6.5 / Windows CE 5.0
CPU	PXA320 806MHz
Display	3.5" QVGA (240 X 320), VGA(480 X 640), 262K color
Memory	RAM : 256MB, ROM : 512MB (Option up to 1GB)
USB	2.0
Key	Numeric, Qwerty, Azerty
Camera	3M pixel with Auto focus & Flash
Battery	Standard 2,400 mAh / 3,600mAh(Optional) Li-ion Polymer
HF RFID	13.56MHz ISO15693 / ISO 14443(MiFare) and B(optional)
Telecomm.	HSUPA, GSM, EDGE, GPRS, WCDMA2100
Barcode Scanner	1D scanner, 2D imager
GPS	A-GPS
WLAN	IEEE 802.11 b/g/n, a/b/g (Optional)
Bluetooth	Bluetooth Ver2.0 Class II

# **DOTH-300S** [Basic Type]

## HF RFID READER DOTH-300S

APPLICATIONS & BENEFITS



### Handheld Computer DOTH-300S Systematized at Warehouse & Inventory

#### Warehouse, Inventory control

The DOTH-300S is primarily designed to allow quick, cost-effective, and permanent HF RFID tagging of apparel, shoes and other textile and leather goods. Once an HF RFID tag is attached, the heat sealing tag offers a secure anti-tampering functionally as they cannot be removed without breaking. So, these HF RFID tags are recommended to be used for expensive products.



With the rapid growth of RFID tech, the HF RFID reader/writer has become more and more mature, stable, durable and reliable.

As people can see, along with the booming of e-commerce, DOTH-300S HF RFID has come to the forefront of the logistics industry, especially in warehouse and inventory control.



#### Effective management

For inventory management, the DOTH-300S provides a reliable reading distance ranging from 2-5cm by integrating with an anti-collision function. This HF RFID reader and writer allows for a high identification rate by automatically detecting up to 50 tags per second, which enables inventory to be updated in real time without moving products or scanning them one by one.



In comparison with traditional tools, the DOTH-300S has obvious advantages, including MIFARE identification, quick monitoring and real-time tracking. When you use the DOTH-300S, the process of inventory control can become simplified and accelerated, and automated and real-time data collection will come true.

What's more, DOTH-300S has the ability to optimize the procedure, enhance working efficiency and improve the level of customer service. In short, because of its brilliant performance, it becomes an important figure in inventory management and contributes a lot to the development of modern logistics industry.



## BARCODE SCANNER DOTH-300S APPLICATIONS & BENEFITS



**Handheld Computer DOTH-300S**  
Speed Control in Inventory and warehouse

### Handheld Computer DOTH-300S Speed Control in Inventory and warehouse

#### Speed Checkout

With the DOTH-300S scanner in hand, your inventory management is cost effective and saves time as workers can capture data as fast as possible. This cost-effective device combines a camera, Wi-Fi, GPS and Bluetooth so workers can easily send the data to the main system after work and take pictures if needed.

#### Scanner options

For our customer's satisfaction, you can choose between the Opticon and Symbol of scanners.

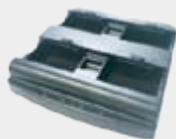
DOTH-300S cordless barcode scanner will increase productivity, accuracy and revenue.

**For customer satisfaction**  
**Two battery capacity available**  
**(2,400mAh or 3,600mAh)**

The slim but rugged PDA, the first of its kind

## Accessories

**DOT**  
DOTH-300S



**4 Slot Battery Charger**



**Power Adapter**  
for 4 Slot Cradle & 4 Slot Battery  
Charger



**Mount for Vehicle Cradle**



**Car Cigar Jack Charger**  
IN : 12-24V, OUT : 5V, 2A



**Li-Polymer Battery (2,400mAh)**  
[or Option 3,600mAh]



**DC charger**  
IN : 100-240V ~ 50/60Hz 0.6A,  
OUT : 5.0V / 4.0A



**Carrying Case, Fabric**  
inc. belt-clip & shoulder strap

